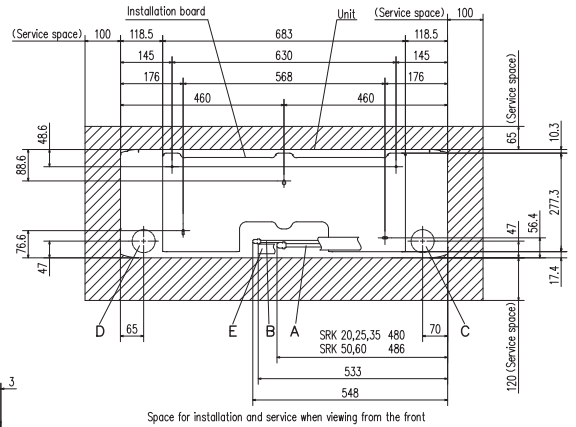
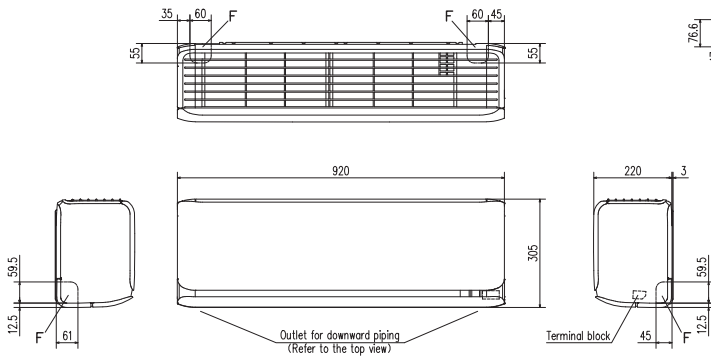


# DIMENSIONS (Unit: mm)

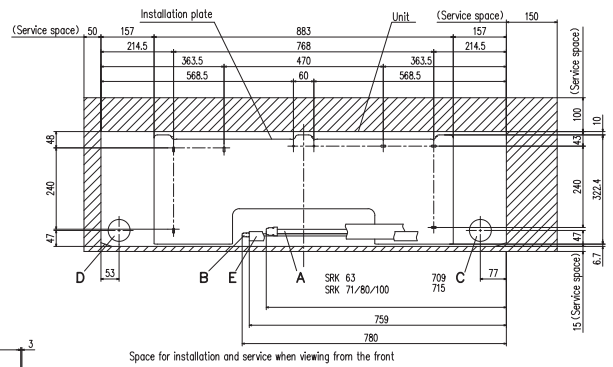
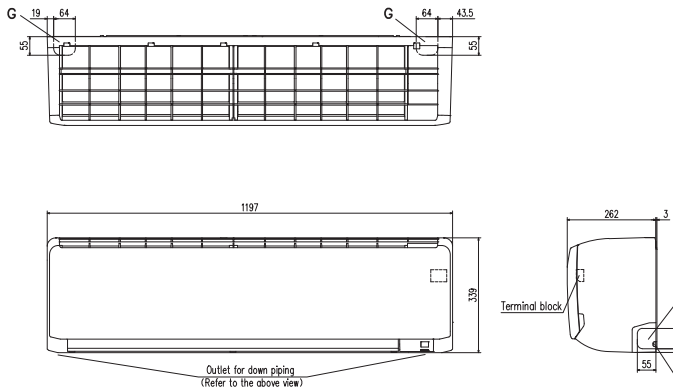
SRK20ZSX-WF, -WFB, -WFT, -W  
 SRK25ZSX-WF, -WFB, -WFT, -W  
 SRK35ZSX-WF, -WFB, -WFT, -W  
 SRK50ZSX-WF, -WFB, -WFT, -W  
 SRK60ZSX-WF, -WFB, -WFT, -W  
 SRK20ZSX-S SRK25ZSX-S SRK35ZSX-S  
 SRK50ZSX-S SRK60ZSX-S



Space for installation and service when viewing from the front

Symbol	Content
A	Gas piping SRK 20,25,35 SRK 50,60 #9.52 (3/8") (Flare) #12.7 (1/2") (Flare)
B	Liquid piping #6.35 (1/4") (Flare)
C	Hole on wall for right rear piping (φ65)
D	Hole on wall for left rear piping (φ65)
E	Drain hose VP16
F	Outlet for piping

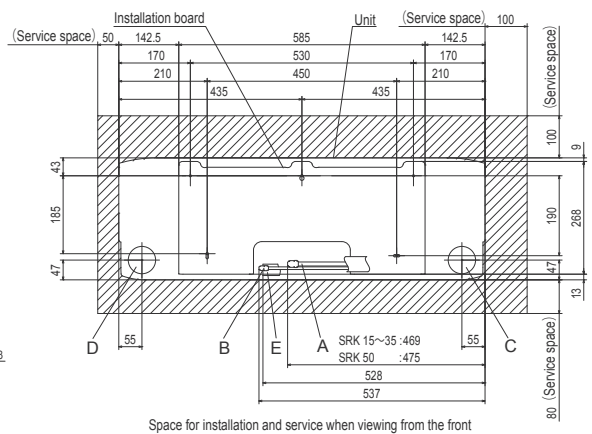
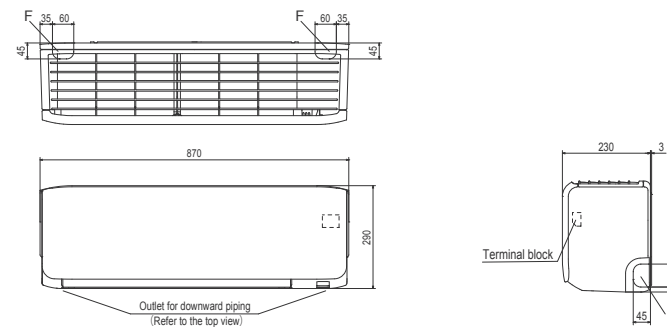
SRK63ZR-WF, -W SRK71ZR-WF, -W  
 SRK80ZR-WF, -W SRK100ZR-WF, -W  
 SRK63ZR-S SRK71ZR-S  
 SRK80ZR-S SRK100ZR-S



Space for installation and service when viewing from the front

Symbol	Content
A	Gas piping SRK 63 SRK 71,80,100 #12.7 (1/2") (Flare) #15.88 (5/8") (Flare)
B	Liquid piping SRK 63,71,80 SRK 100 #6.35 (1/4") (Flare) #9.52 (3/8") (Flare)
C	Hole on wall for right rear piping (φ65)
D	Hole on wall for left rear piping (φ65)
E	Drain hose VP16
F	Outlet for wiring (on both side)
G	Outlet for piping (on both side)

SRK15ZS-WF, -WFB, -WFT  
 SRK20ZS-WF, -WFB, -WFT, -W  
 SRK25ZS-WF, -WFB, -WFT, -W  
 SRK35ZS-WF, -WFB, -WFT, -W  
 SRK50ZS-WF, -WFB, -WFT, -W  
 SRK20ZS-S, -SB, -ST SRK25ZS-S, -SB, -ST  
 SRK35ZS-S, -SB, -ST SRK50ZS-S, -SB, -ST

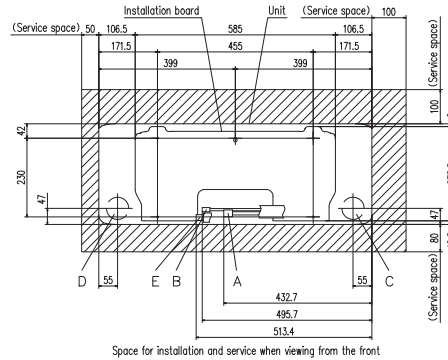
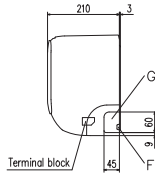
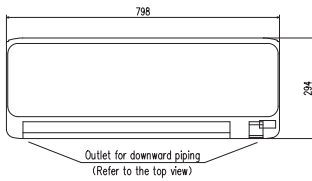


Space for installation and service when viewing from the front

Symbol	Content
A	Gas piping SRK15~35 SRK50 #9.52 (3/8") (Flare) #12.7 (1/2") (Flare)
B	Liquid piping #6.35 (1/4") (Flare)
C	Hole on wall for right rear piping (φ65)
D	Hole on wall for left rear piping (φ65)
E	Drain hose VP16
F	Outlet for piping (on both side)

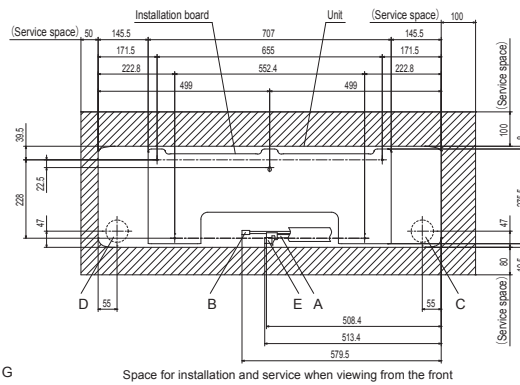
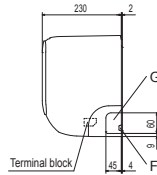
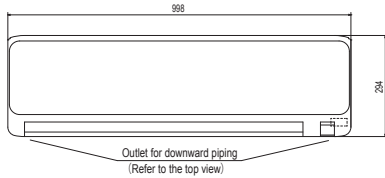
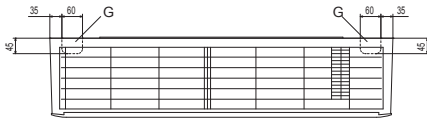
# INDOOR UNIT

## SRK15ZTL-W SRK20ZTL-W SRK25ZTL-W SRK35ZTL-W SRK50ZTL-W



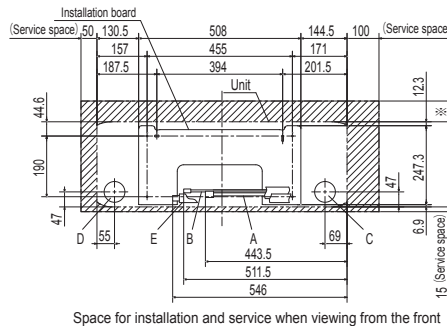
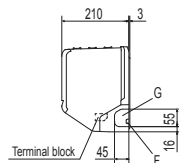
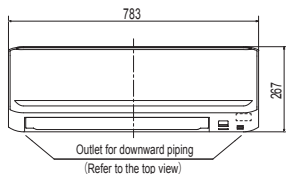
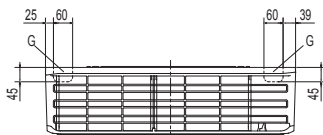
Symbol	Content
A	Gas piping SRK 15,20,25,35 $\phi 9.52 (3/8")$ (Flare) SRK 50 $\phi 12.7 (1/2")$ (Flare)
B	Liquid piping $\phi 6.35 (1/4")$ (Flare)
C	Hole on wall for right rear piping ( $\phi 65$ )
D	Hole on wall for left rear piping ( $\phi 65$ )
E	Drain hose VP16
F	Outlet for wiring (on both side)
G	Outlet for piping (on both side)

## SRK63ZTL-W SRK71ZTL-W



Symbol	Content
A	Gas piping $\phi 12.7 (1/2")$ (Flare)
B	Liquid piping $\phi 6.35 (1/4")$ (Flare)
C	Hole on wall for right rear piping ( $\phi 65$ )
D	Hole on wall for left rear piping ( $\phi 65$ )
E	Drain hose VP16
F	Outlet for wiring (on both side)
G	Outlet for piping (on both side)

## SRK25ZSP-W SRK35ZSP-W SRK45ZSP-W SRK50ZSP-W SKM15ZSP-W SKM20ZSP-W SKM25ZSP-W SKM35ZSP-W

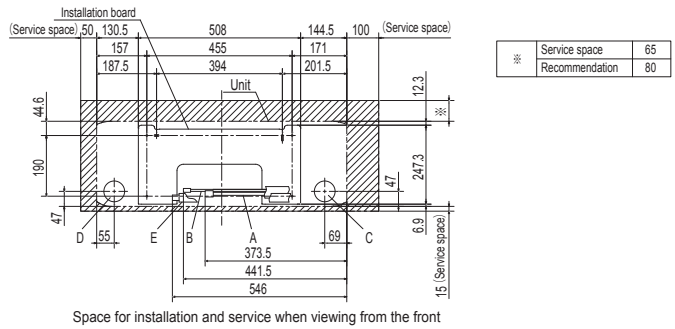
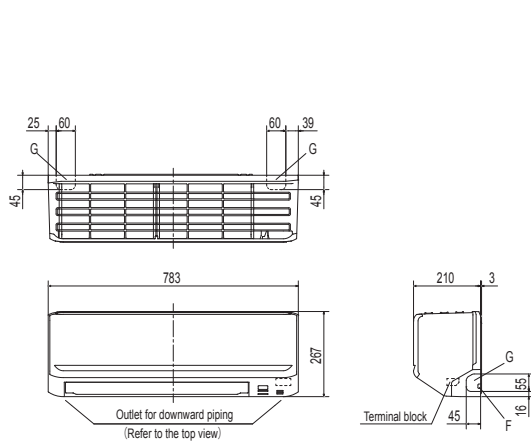


**	Service space Recommendation	65 80
----	------------------------------	----------

Symbol	Content
A	Gas piping SRK25,35 SKM15~35 $\phi 9.52 (3/8")$ (Flare) SRK45,50 $\phi 12.7 (1/2")$ (Flare)
B	Liquid piping $\phi 6.35 (1/4")$ (Flare)
C	Hole on wall for right rear piping ( $\phi 65$ )
D	Hole on wall for left rear piping ( $\phi 65$ )
E	Drain hose VP16
F	Outlet for wiring
G	Outlet for piping (on both side)

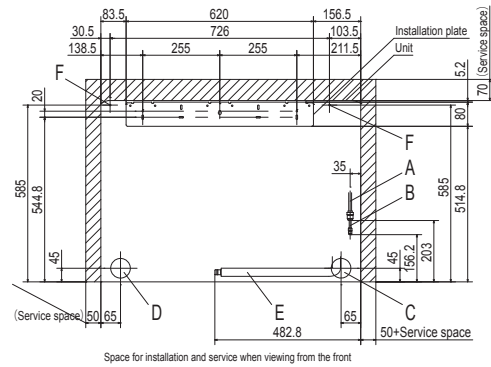
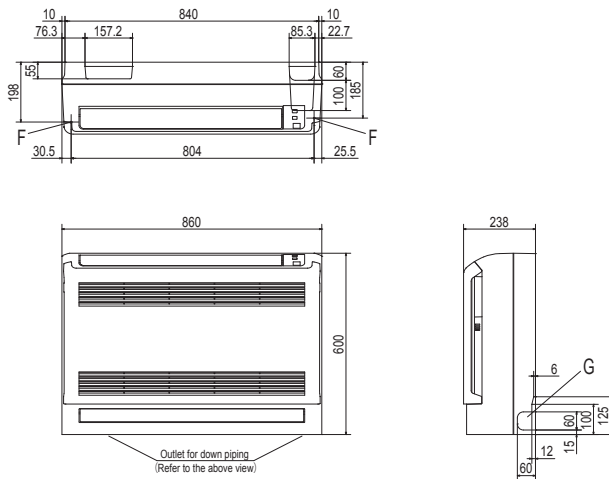
# DIMENSIONS (Unit: mm)

## SRK25ZSP-S SRK35ZSP-S SRK45ZSP-S



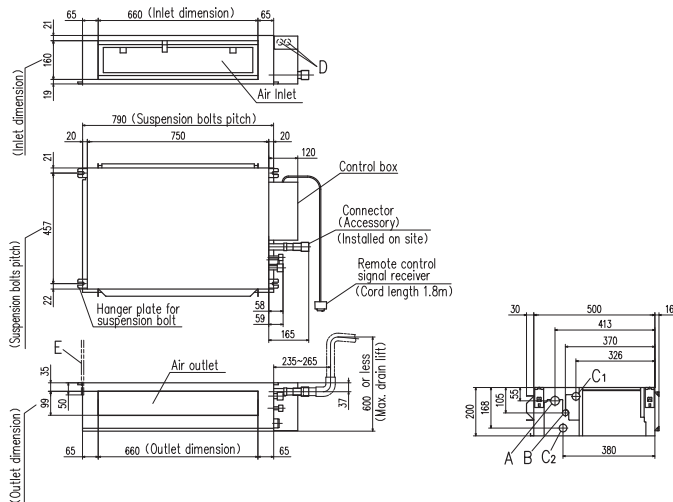
Symbol	Content
A	Gas piping $\phi 9.52$ (3/8") (Flare)
B	Liquid piping $\phi 12.7$ (1/2") (Flare)
C	Hole on wall for right rear piping ( $\phi 65$ )
D	Hole on wall for left rear piping ( $\phi 65$ )
E	Drain hose VP16
F	Outlet for wiring
G	Outlet for piping (on both side)

## SRF25ZS-W SRF35ZS-W SRF50ZSX-W SRF25ZMX-S SRF35ZMX-S SRF50ZMX-S

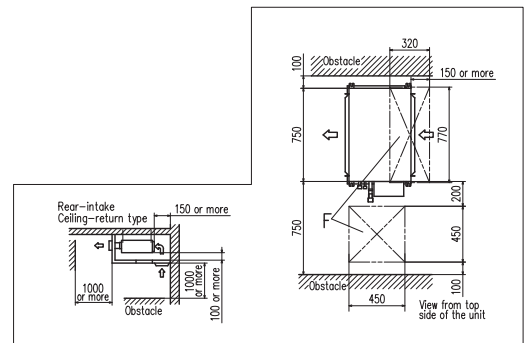


Symbol	Content
A	Gas piping Model 25.35 : $\phi 9.52$ (3/8") (Flare) 50 : $\phi 12.7$ (1/2") (Flare)
B	Liquid piping $\phi 6.35$ (1/4") (Flare)
C	Hole on wall for right rear piping ( $\phi 65$ )
D	Hole on wall for left rear piping ( $\phi 65$ )
E	Drain hose VP16
F	Screw point fasten the indoor unit $\phi 5$
G	Outlet for piping (on both side)

## SRR25ZS-W SRR35ZS-W SRR25ZM-S SRR35ZM-S



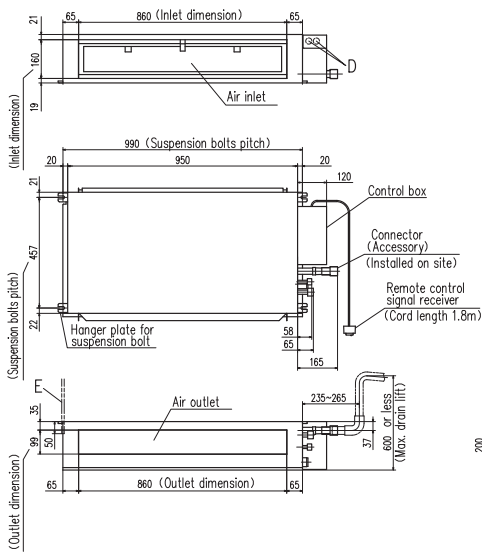
Space for installation and service



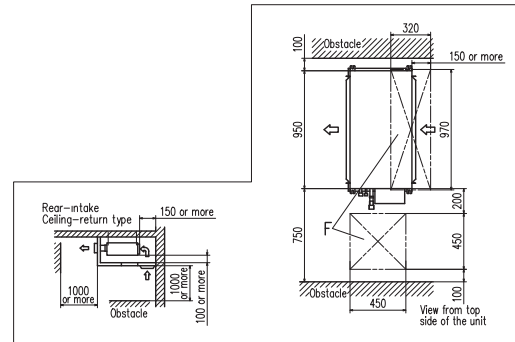
Symbol	Model	Content
		25.35
A	Gas piping	$\phi 9.52$ (3/8") (Flare)
B	Liquid piping	$\phi 6.35$ (1/4") (Flare)
C1	Drain piping	VP25 (I.D.25, O.D.32)
C2	Drain piping (Used with attached connector)	VP25 (I.D.25, O.D.32)
C3	Drain piping (Used with attached connector)	VP25 (I.D.25, O.D.32)
D	Hole for wiring	$\phi 25 \times 2$
E	Suspension bolts	(M10)
F	Inspection hole	( $450 \times 450$ ), ( $1300 \times 770$ )

# INDOOR UNIT

## SRR50ZS-W SRR60ZS-W

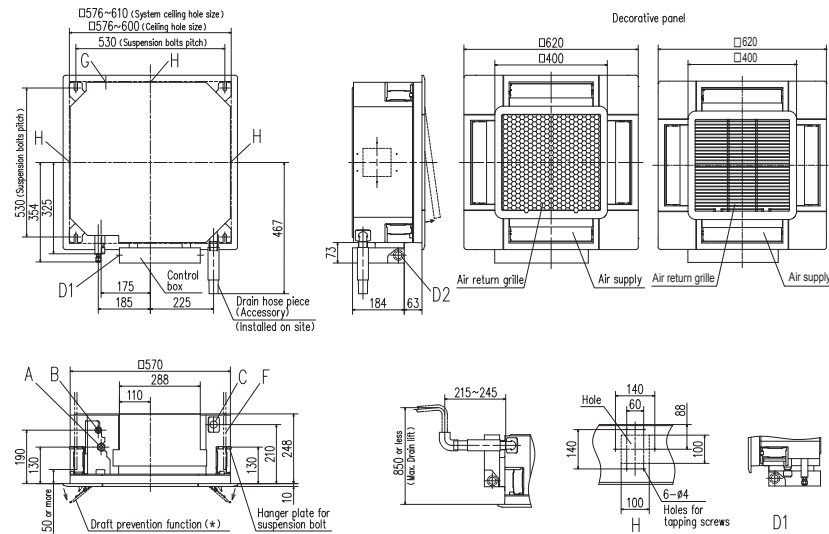


Space for installation and service



Symbol	Model	Content
		50,60
A	Gas piping	φ12.7 (1/2") (Flare)
B	Liquid piping	φ6.35 (1/4") (Flare)
C	Drain piping	VP25 (D.0.25, O.D.32)
C1	Drain piping	(Used with attached connector)
C2	Drain piping	VP25 (D.0.25, O.D.32)
C3	Drain piping	(Used with attached connector)
D	Hole for wiring	φ25 × 2
E	Suspension bolts	(M10)
F	Inspection hole	(450X450, 1320X970)

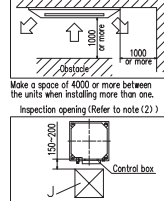
## FDTC25VH1 FDTC35VH1 FDTC40VH FDTC50VH FDTC60VH



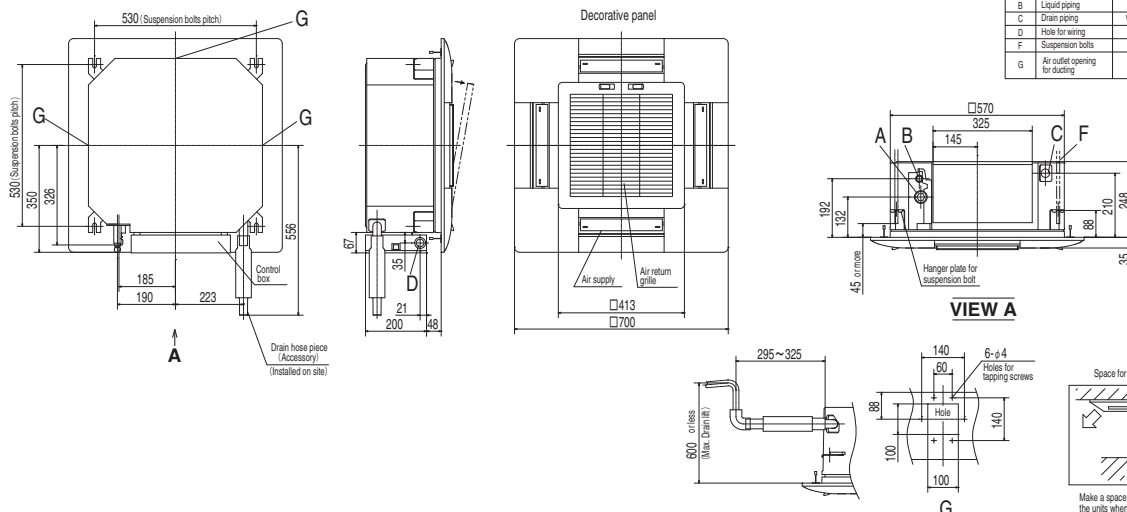
- Notes
- (1) The model name label is attached to the control box lid.
  - (2) This unit is designed for 2x2 grid ceiling. If it is installed on a ceiling other than 2x2 grid ceiling, provide an inspection opening on the control box side.
  - (3) Draft prevention function (\*) is provided on the panel TC-PSA(G/E)-5AW-E only.

Symbol	Content
	25 35 40-60
A	Gas piping
B	Liquid piping
C	Drain piping
D1	Power supply connection
D2	Remote control code and signal wiring connection
F	Suspension bolts
G	Outside air opening for ducting
H	Air outlet opening for ducting
J	Inspection opening

Space for installation and service

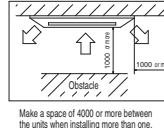


## FDTC25VF FDTC35VF FDTC40VF FDTC50VF FDTC60VF



Symbol	Content
	25 35 40 ~ 60
A	Gas piping
B	Liquid piping
C	Drain piping
D	Hole for wiring
F	Suspension bolts
G	Air outlet opening for ducting

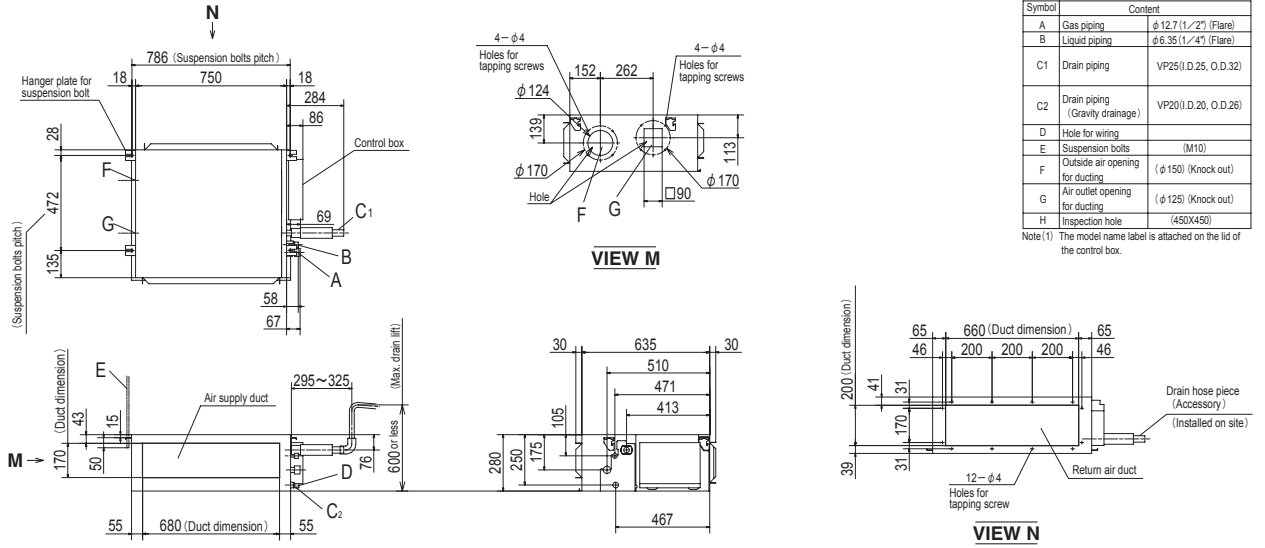
Space for installation and service



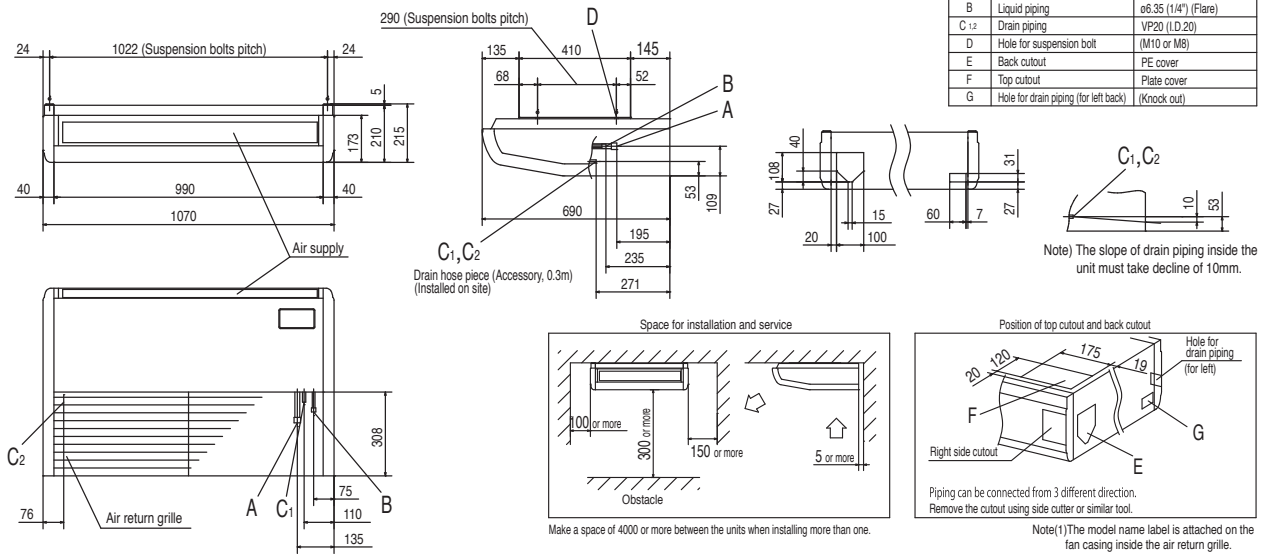
# DIMENSIONS (Unit: mm)

# INDOOR UNIT

## FDUM50VH

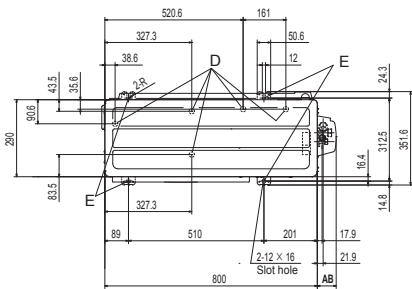


## FDE50VH



# OUTDOOR UNIT

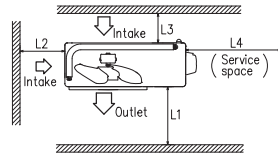
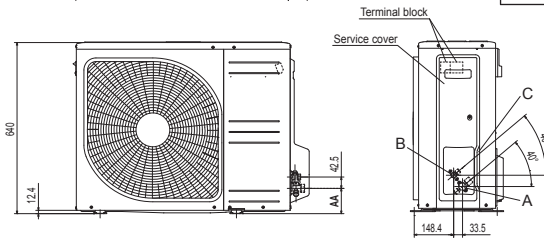
**SRC20ZSX-W,-S SRC25ZSX-W,-S SRC35ZSX-W,-S SRC40ZSX-W1,-S SRC50ZSX-W2,-S**  
**SRC60ZSX-W1,-S SRC63ZR-W,-S SRC63ZTL-W SRC71ZTL-W**



Symbol	Content
A	Service valve connection (gas side) 20,25,35 $\phi$ 9.52(3/8") (Flare) 40,50,60,63,71 $\phi$ 12.7(1/2") (Flare)
B	Service valve connection (liquid side) $\phi$ 6.35 (1/4") (Flare)
C	Pipe/cable draw-out hole
D	Drain discharge hole $\phi$ 20x5places
E	Anchor bolt hole M10-12x4places

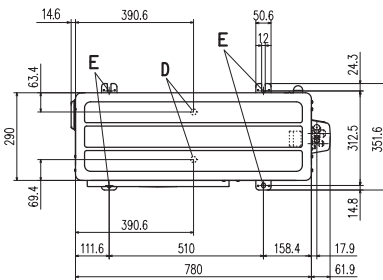
Minimum installation space				
Examples of installation				
Dimensions	I	II	III	IV
L1	Open	280	280	180
L2	100	75	Open	Open
L3	100	80	80	80
L4	250	Open	250	Open

	AA	AB
ZSX	93	71.2
ZR	94.5	71
ZTL	94.5	71



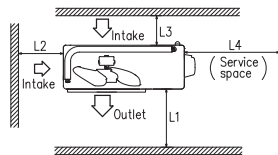
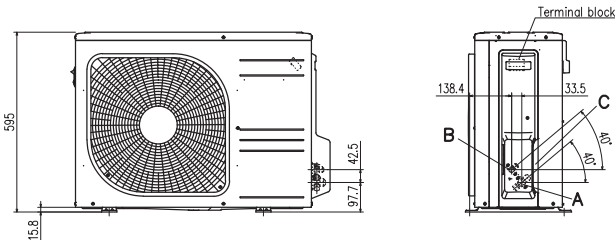
\* The ZSX / ZR series does not have fin guard.

**SRC50ZS-W,-S SRC25ZMX-S SRC35ZMX-S SRC50ZTL-W SRC45ZSP-W,-S SRC50ZSP-W**

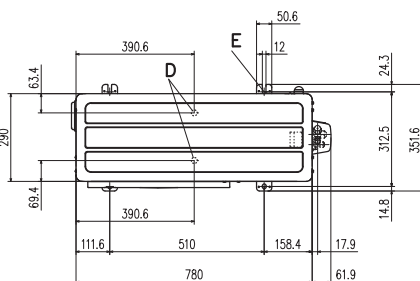


Symbol	Content
A	Service valve connection (gas side) ZMX : $\phi$ 9.52(3/8") (Flare) ZS,ZTL,ZSP : $\phi$ 12.7(1/2") (Flare)
B	Service valve connection (liquid side) $\phi$ 6.35 (1/4") (Flare)
C	Pipe/cable draw-out hole
D	Drain discharge hole $\phi$ 20x2places
E	Anchor bolt hole M10-12x4places

Installation space	
L1	280 or more
L2	100 or more
L3	80 or more
L4	250 or more

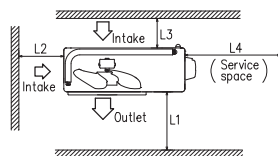
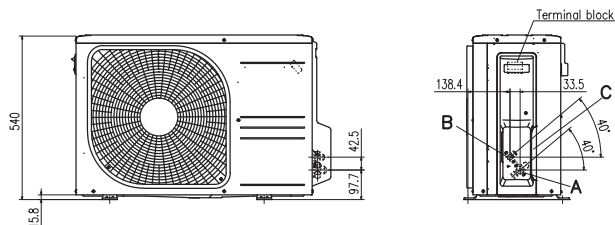


**SRC20ZS-W,-S SRC25ZS-W2,-S SRC35ZS-W2,-S**



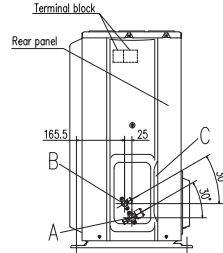
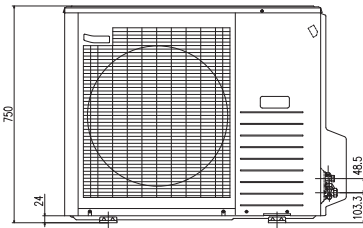
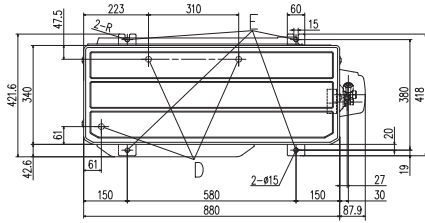
Symbol	Content
A	Service valve connection (gas side) $\phi$ 9.52 (3/8") (Flare)
B	Service valve connection (liquid side) $\phi$ 6.35 (1/4") (Flare)
C	Pipe/cable draw-out hole
D	Drain discharge hole $\phi$ 20x2places
E	Anchor bolt hole M10-12x4places

Installation space	
L1	280 or more
L2	100 or more
L3	80 or more
L4	250 or more



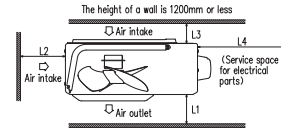
# DIMENSIONS (Unit: mm)

## SRC71ZR-W,-S SRC80ZR-W,-S FDC100VNP-W

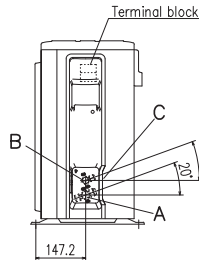
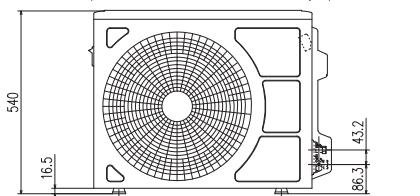
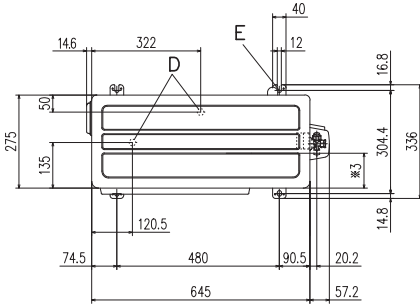


Symbol	Content	
A	Service valve connection (gas side)	φ15.88 (5/8") (Flare)
B	Service valve connection (liquid side)	φ6.35 (1/4") (Flare)
C	Pipe/cable draw-out hole	
D	Drain discharge hole	φ20 x 3 places
E	Anchor bolt hole	M10 x 4 places

Dimensions	Example of installation		
	I	II	III
L1	Open	Open	500
L2	300	250	Open
L3	100	150	100
L4	250	250	250

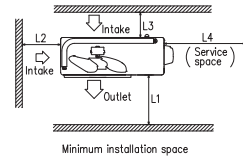


## SRC15ZTL-W SRC20ZTL-W SRC25ZTL-W SRC35ZTL-W SRC25ZSP-W,-S SRC35ZSP-W,-S

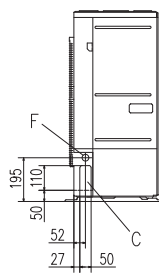
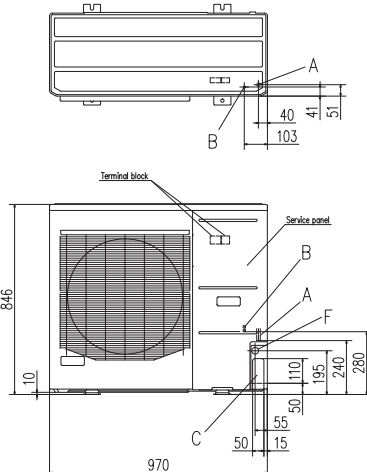


Symbol	Content	
A	Service valve connection (gas side)	φ9.52 (3/8") (Flare)
B	Service valve connection (liquid side)	φ6.35 (1/4") (Flare)
C	Pipe/cable draw-out hole	
D	Drain discharge hole	φ20x2places
E	Anchor bolt hole	M10-12x4places

Installation space	
L1	280 or more
L2	100 or more
L3	80 or more
L4	250 or more

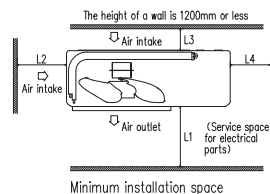
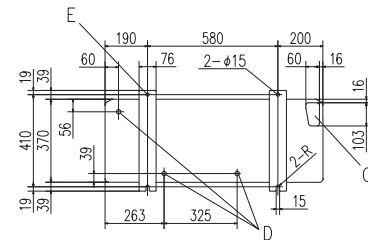


## FDC100VNP



Symbol	Content	
A	Service valve connection (gas side)	φ15.88 (5/8") (Flare)
B	Service valve connection (liquid side)	φ9.52 (3/8") (Flare)
C	Pipe/cable draw-out hole	
D	Drain discharge hole	φ20x3 places
E	Anchor bolt hole	M10x4 places
F	Cable draw-out hole	φ30x3 places

- Notes
- (1) It must not be surrounded by walls on the four sides.
  - (2) The unit must be fixed with anchor bolts. An anchor bolt must not protrude more than 15mm.
  - (3) Where the unit is subject to strong winds, lay it in such a direction that the blower outlet face is perpendicular to the dominant wind direction.
  - (4) Leave 1m or more space above the unit.
  - (5) A wall in front of the blower outlet must not exceed the units height.
  - (6) The model name label is attached on the service panel.

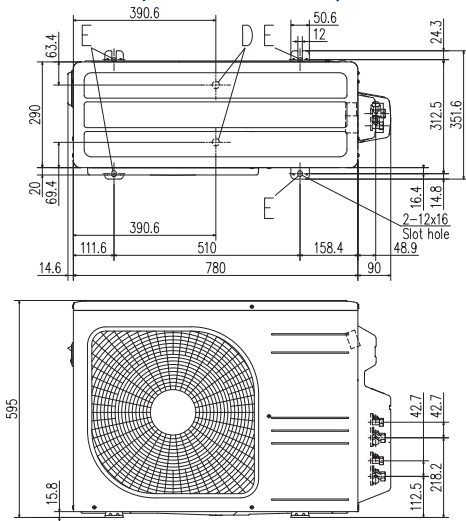


Dimensions	Example of installation		
	I	II	III
L1	Open	Open	500
L2	300	250	Open
L3	100	150	100
L4	250	250	250



# OUTDOOR UNIT

## SCM30ZS-W SCM40ZS-W,-S SCM45ZS-W,-S

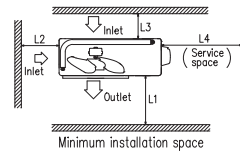
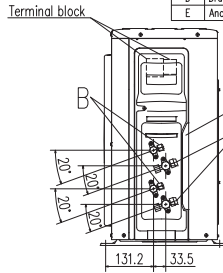


### Notes

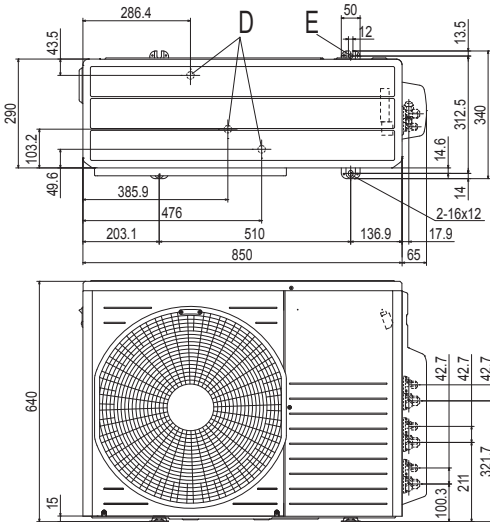
- (1) The unit must not be surrounded by walls on the four sides.
- (2) The unit must be fixed with anchor bolts. An anchor bolt must not protrude more than 15mm.
- (3) If the unit is installed in the location where there is a possibility of strong winds, place the unit such that the direction of air from the outlet gets perpendicular to the wind direction.
- (4) Leave 200mm or more space above the unit.
- (5) The wall height on the outlet side should be 1200mm or less.
- (6) The model name label is attached on the right side of the unit.

Symbol	Content
A	Service valve connection (gas side) $\phi 9.52$ (3/8") (Flare)
B	Service valve connection (liquid side) $\phi 6.35$ (1/4") (Flare)
C	Pipe / cable draw-out hole
D	Drain discharge hole
E	Anchor bolt hole

	Installation space
L1	280 or more
L2	100 or more
L3	80 or more
L4	250 or more



## SCM41ZS-W SCM50ZS-W SCM60ZS-W SCM50ZS-S1 SCM60ZM-S1

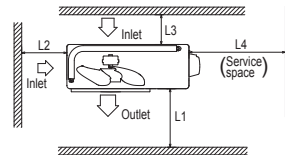
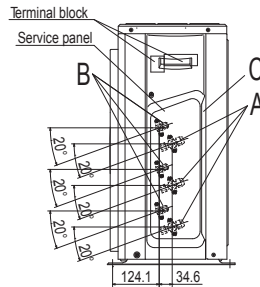


### Notes

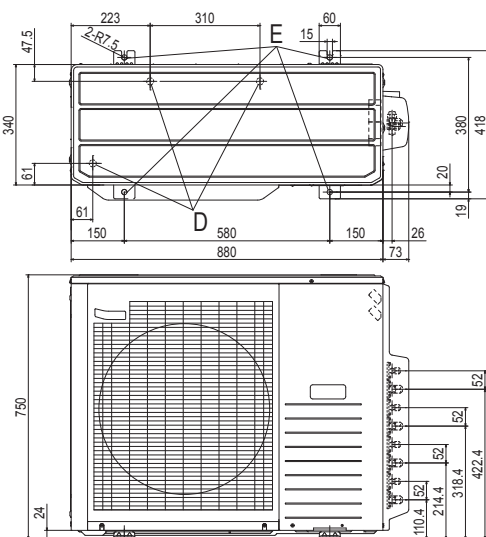
- (1) The unit must not be surrounded by walls on the four sides.
- (2) The unit must be fixed with anchor bolts. An anchor bolt must not protrude more than 15mm.
- (3) If the unit is installed in the location where there is a possibility of strong winds, place the unit such that the direction of air from the outlet gets perpendicular to the wind direction.
- (4) Leave 200mm or more space above the unit.
- (5) The wall height on the outlet side should be 1200mm or less.
- (6) The model name label is attached on the right side of the unit.

Symbol	Content
A	Service valve connection (gas side) $\phi 9.52$ (3/8") Flare
B	Service valve connection (liquid side) $\phi 6.35$ (1/4") Flare
C	Pipe / cable draw-out hole
D	Drain discharge hole
E	Anchor bolt hole

	Minimum installation space
L1	600 or more
L2	100 or more
L3	100 or more
L4	No obstacles (Service space or electrical parts)



## SCM71ZS-W SCM80ZS-W SCM71ZM-S1 SCM80ZM-S1



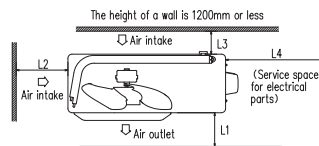
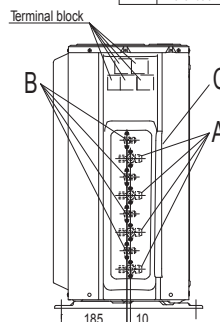
### Notes

- (1) It must not be surrounded by walls on four sides.
- (2) The unit must be fixed with anchor bolts. An anchor bolt must not protrude more than 15mm.
- (3) Where the unit is subjected to strong winds, lay it in such a direction that the blower outlet faces perpendicularly to the dominant wind direction.
- (4) Leave 1.2m or more space above the unit.
- (5) A wall in front of the blower outlet must not exceed the unit's height.
- (6) The model name label is attached on the rear panel.

Symbol	Content
A	Service valve connection (gas side) $\phi 9.52$ (3/8") Flare
B	Service valve connection (liquid side) $\phi 6.35$ (1/4") Flare
C	Pipe / cable draw-out hole
D	Drain discharge hole
E	Anchor bolt hole

### Minimum installation space

Examples of installation Dimensions	Minimum installation space		
	I	II	III
L1	Open	Open	500
L2	300	250	Open
L3	100	150	100
L4	250	250	250

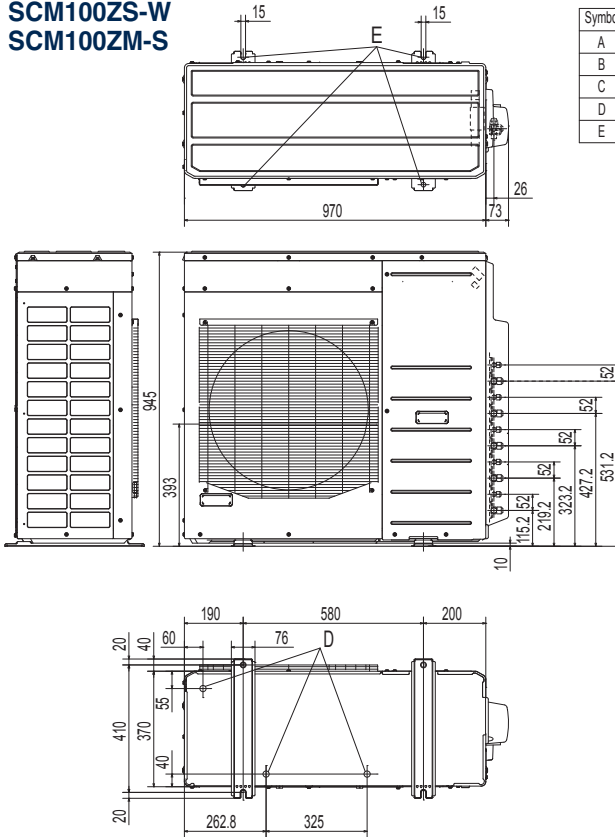




# DIMENSIONS (Unit: mm)

# OUTDOOR UNIT

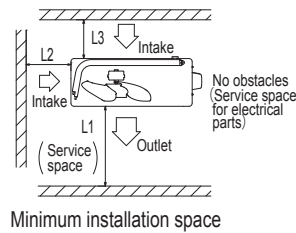
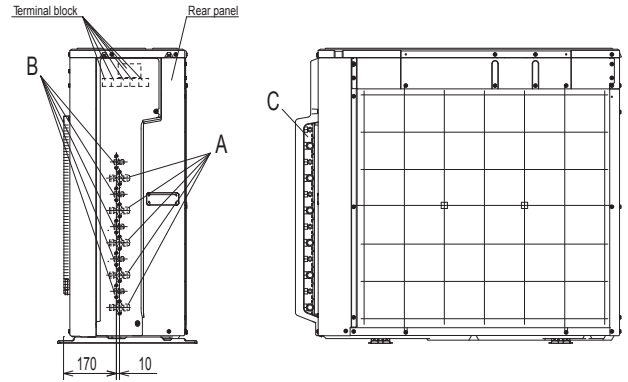
## SCM100ZS-W SCM100ZM-S



Symbol	Content
A	Service valve connection (gas side) $\phi 9.52$ (3/8") (Flare)
B	Service valve connection (liquid side) $\phi 6.35$ (1/4") (Flare)
C	Pipe/cable draw-out hole
D	Drain discharge hole $\phi 20 \times 3$ places
E	Anchor bolt hole M10 $\times 4$ places

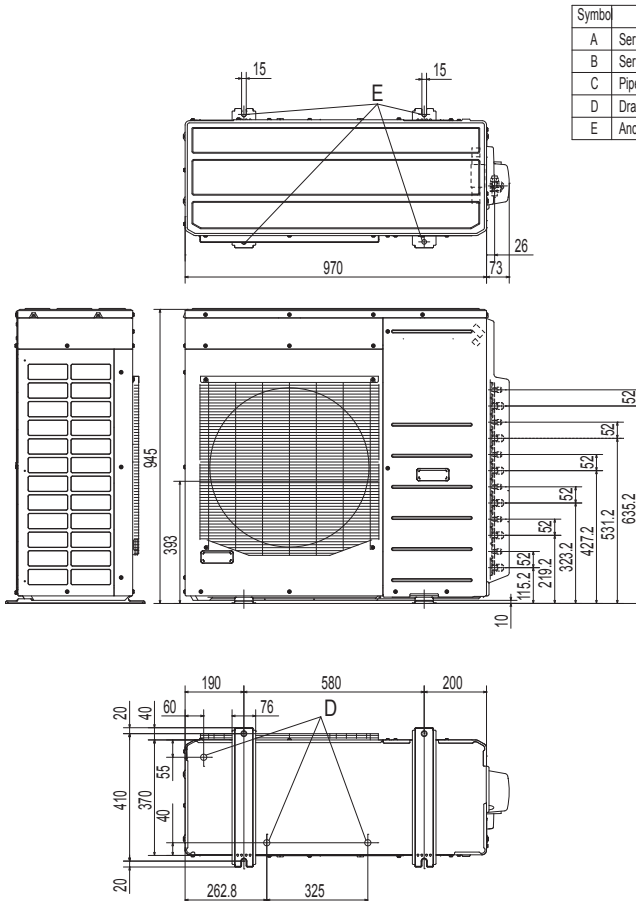
### Notes

- (1) It must not be surrounded by walls on the four sides.
- (2) The unit must be fixed with anchor bolts. An anchor bolt must not protrude more than 15mm.
- (3) Where the unit is subject to strong winds, lay it in such a direction that the blower outlet faces perpendicularly to the dominant wind direction.
- (4) Leave 1m or more space above the unit.
- (5) A wall in front of the blower outlet must not exceed the units height.
- (6) The model name label is attached on the rear panel.



Examples of installation Dimensions	I	II	III
L1	Open	Open	500
L2	300	5	Open
L3	150	300	150

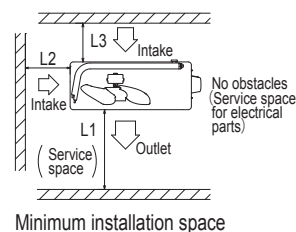
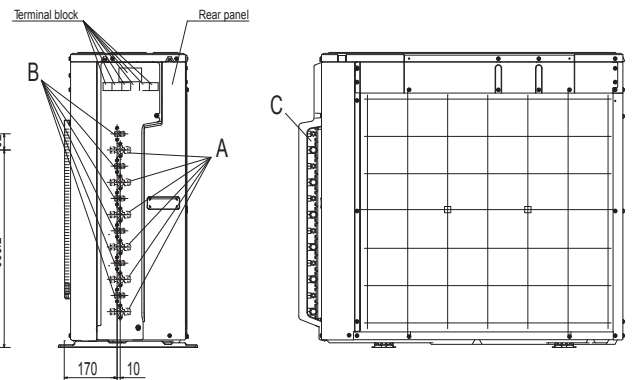
## SCM125ZM-S



Symbol	Content
A	Service valve connection (gas side) $\phi 9.52$ (3/8") (Flare)
B	Service valve connection (liquid side) $\phi 6.35$ (1/4") (Flare)
C	Pipe/cable draw-out hole
D	Drain discharge hole $\phi 20 \times 3$ places
E	Anchor bolt hole M10 $\times 4$ places

### Notes

- (1) It must not be surrounded by walls on the four sides.
- (2) The unit must be fixed with anchor bolts. An anchor bolt must not protrude more than 15mm.
- (3) Where the unit is subject to strong winds, lay it in such a direction that the blower outlet faces perpendicularly to the dominant wind direction.
- (4) Leave 1m or more space above the unit.
- (5) A wall in front of the blower outlet must not exceed the units height.
- (6) The model name label is attached on the rear panel.



Examples of installation Dimensions	I	II	III
L1	Open	Open	500
L2	300	5	Open
L3	150	300	150